

NOV 7 - 13, 2022

The Brooklyn luxury real estate market, defined as all properties priced \$2M and above, saw 14 contracts signed this week, made up of 5 condos, 1 coop, and 8 houses. The previous week saw 28 deals. For more information or data, please reach out to a Compass agent.

\$3,040,643

Average Asking Price

\$2,585,000

Median Asking Price

\$1,381

Average PPSF

2%

Average Discount

\$42,568,999

Total Volume

79

Average Days On Market

Unit 25B at 30 Front Street in DUMBO entered contract this week, with a last asking price of \$6,350,000. Built in 2021, this condo unit spans 2,690 square feet with 3 beds and 3 full baths. It features a custom kitchen with stone slab counters and maple cabinetry, a primary bedroom with bridge views, a large walk-in closet, and en-suite bath, a walk-in pantry, high-end appliances, floor-to-ceiling windows, and much more. The building provides a 24-hour doorman and concierge, a private garden lounge, a large fitness center with indoor and outdoor lap pools, on-site parking, and many other amenities.

Also signed this week was 593 11th Street in Park Slope, with a last asking price of \$4,395,000. This single-family home spans approximately 3,200 square feet with 4 beds and 4 full baths. It features original details including its staircase, an open kitchen with abundant counter space, a family room with fireplace and glass wall, a landscaped garden, high ceilings, built-in storage, a primary floor with large den and glass double doors, a full-width bunk room, and much more.

5

Condo Deal(s)

1

Co-op Deal(s)

8

Townhouse Deal(s)

\$3,189,000

Average Asking Price

\$2,135,000

Average Asking Price

\$3,061,125

Average Asking Price

\$2,495,000

Median Asking Price

\$2,135,000

Median Asking Price

\$2,975,000

Median Asking Price

\$1,634

Average PPSF

N/A

Average PPSF

\$1,223

Average PPSF

1,893

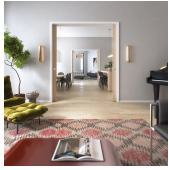
Average SqFt

N/A

Average SqFt

2,636

Average SqFt



30 FRONT ST #25B

Dumbo

Type	Condo	Status	Contract	Ask	\$6,350,000
SqFt	2,690	Beds	3	Baths	3
PPSF	\$2,361	Fees	\$4,983	DOM	279



593 11TH ST

Park Slope

Type	Townhouse	Status	Contract	Ask	\$4,395,000
SqFt	3,200	Beds	4	Baths	4
PPSF	\$1,374	Fees	\$854	DOM	N/A



512 10TH ST

Park Slope

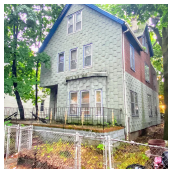
Type	Townhouse	Status	Contract	Ask	\$3,995,000
SqFt	2,052	Beds	4	Baths	3
PPSF	\$1,947	Fees	\$536	DOM	19



286 1ST ST

Park Slope

Type	Townhouse	Status	Contract	Ask	\$3,100,000
SqFt	2,700	Beds	6	Baths	4
PPSF	\$1,149	Fees	\$618	DOM	119



1220 56TH ST

Borough Park

Type	Townhouse	Status	Contract	Ask	\$2,999,999
SqFt	1,934	Beds	5	Baths	2
PPSF	\$1,552	Fees	\$758	DOM	65

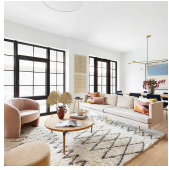


1859 EAST 9TH ST

Gravesend

Type	Townhouse	Status	Contract	Ask	\$2,950,000
SqFt	2,600	Beds	4	Baths	2
PPSF	\$1,135	Fees	\$808	DOM	42

Compass is a licensed real estate broker and abides by Equal Housing Opportunity laws. All material presented herein is intended for informational purposes only. Information is compiled from sources deemed reliable but is subject to errors, omissions, changes in price, condition, sale, or withdrawal without notice. No statement is made as to the accuracy of any description. All measurements and square footages are approximate. This is not intended to solicit property already listed. Nothing herein shall be construed as legal, accounting or other professional advice outside the realm of real estate brokerage.



533 PACIFIC ST #8E

Boerum Hill

Type	Condo	Status	Contract
Sqft	1,416	Beds	3
PPSF	\$1,890	Fees	\$2,851

Ask	\$2,675,000
Baths	2
DOM	62

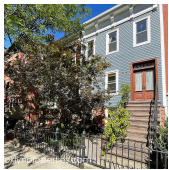


172 NORTH 10TH ST #3C

Williamsburg

Type	Condo	Status	Contract
Sqft	1,710	Beds	3
PPSF	\$1,460	Fees	\$2,294

Ask	\$2,495,000
Baths	3
DOM	26

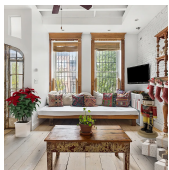


285A 13TH ST

Park Slope

Type	Townhouse	Status	Contract
Sqft	2,000	Beds	6
PPSF	\$1,200	Fees	N/A

Ask	\$2,400,000
Baths	2
DOM	43

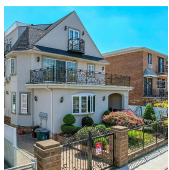


686 GREENE AVE

Bedford Stuyvesant

Type	Townhouse	Status	Contract
Sqft	3,600	Beds	6
PPSF	\$653	Fees	\$700

Ask	\$2,350,000
Baths	3.5
DOM	175

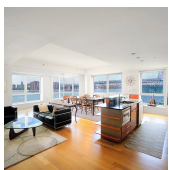


43 BAY 25TH ST

Bath Beach

Type	Townhouse	Status	Contract
Sqft	3,000	Beds	6
PPSF	\$767	Fees	\$930

Ask	\$2,299,000
Baths	4
DOM	24



446 KENT AVE #7A

Williamsburg

Type	Condo	Status	Contract
Sqft	1,650	Beds	3
PPSF	\$1,379	Fees	\$1,487

Ask	\$2,275,000
Baths	2
DOM	91

Compass is a licensed real estate broker and abides by Equal Housing Opportunity laws. All material presented herein is intended for informational purposes only. Information is compiled from sources deemed reliable but is subject to errors, omissions, changes in price, condition, sale, or withdrawal without notice. No statement is made as to the accuracy of any description. All measurements and square footages are approximate. This is not intended to solicit property already listed. Nothing herein shall be construed as legal, accounting or other professional advice outside the realm of real estate brokerage.



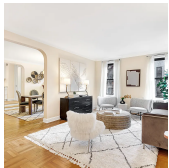
497 9TH ST #1

Type Condo
Sqft 1,999
PPSF \$1,076

Status Contract
Beds 2
Fees \$833

Park Slope

Ask \$2,150,000
Baths 2.5
DOM 36



72 ORANGE ST #4 E

Type Coop
Sqft N/A
PPSF N/A

Status Contract
Beds 3
Fees N/A

Brooklyn Heights

Ask \$2,135,000
Baths 2
DOM 39

Compass is a licensed real estate broker and abides by Equal Housing Opportunity laws. All material presented herein is intended for informational purposes only. Information is compiled from sources deemed reliable but is subject to errors, omissions, changes in price, condition, sale, or withdrawal without notice. No statement is made as to the accuracy of any description. All measurements and square footages are approximate. This is not intended to solicit property already listed. Nothing herein shall be construed as legal, accounting or other professional advice outside the realm of real estate brokerage.